

This week, our Year 6 children are away at PGL enjoying their residential adventure! We are sure they will be having a fantastic time, making wonderful memories, taking on new challenges and building friendships along the way. We can all keep up with their journey by following our Instagram pages, where Mr Puttock will be posting updates and photos at the end of each day. A huge thank you to Miss Senington, Mr Puttock and Mr White, who are giving up time away from their own families to support our children and ensure they have the very best experience possible. While Year 6 are away, our Year 5 children will be stepping into leadership roles around school, enjoying a taster of responsibility and helping to set a great example for the younger pupils.

### Special Assembly for Mary

Thank you to everyone who made a flower to present to Our Lady at our special assembly last week.. It was clear that children had spent a long time making their special bloom – a wonderful tribute to Mary as you can see in the photo below.

### School Meals

Despite moving our school meals payment system to Arbor some time ago, we have recently become aware that Nourish are still accepting payments through ParentPay. We are currently taking this matter up with them. In the meantime, we encourage all parents and carers to stop topping up their ParentPay accounts, as these funds cannot be used to pay for school meals and gaining refunds is proving a lengthy process. Thank you for your understanding and cooperation.

### First Holy Communion 6<sup>th</sup> June

We would like to make the First Holy Communion a special occasion for everyone involved. If your child is in KS2, loves singing and would like to participate, please complete the [Google Form](#) by Friday 22nd May. Thank you for your support.

### PTFA Fathers' Day Shop

St Anselm's PTFA Father's Day Shop will be popping up in school on Thursday 18th June, giving children the opportunity to choose a special gift for their dad or another superhero in their life. Gifts are priced at just £6 each, and vouchers for the children to use when buying the gift can be purchased now online at <http://www.pta-events.co.uk/stanselms> or via the QR code on the attached flier. To ensure enough gifts are available for all children, voucher sales will close at 5pm on Tuesday 16th June.

### PTFA Kickathon

We are really looking forward to our World Cup-inspired Sponsored Kickathon which is taking place on Friday 5<sup>th</sup> June. Sponsorship forms were sent home last week and we encourage all children to try and raise as much money as possible to support the PTFA. To take part, children must have at least one sponsor and bring their completed sponsorship form into school on the day of the event. Children will bring their forms back home to collect the sponsorship money and return to school in the special envelope which was also sent home. Thank you for your continued support — every contribution makes a difference!

### Healthy Eating – break time snacks

Can we please remind you that break time snacks should be fruit or vegetables or snacks purchased from the Tuck Shop which is open on Mondays and Wednesdays.

### School Uniform - footwear

We have noticed that some children are beginning to wear trainers that are not in line with our school uniform policy. Children are permitted to wear plain black trainers only. Trainers should not have visible logos, different coloured soles or bright detailing. Boot-style trainers are also not permitted. Thank you.

### School Term Dates

Please find attached the term dates for the next two academic years,



18<sup>th</sup> May  
Summer 2026

During the month of May, we honour Mary and reflect on her loving example. Last week, we had a special Celebration of the Word in honour of Our Lady. At the Wedding at Cana, Mary showed compassion by noticing the needs of others and helping quietly and kindly. She trusted Jesus completely and encouraged others to “Do whatever Jesus tells you.” Mary reminds us to care for people, pray for those in need, and place our trust in God. As a school community, we are encouraged to follow Mary's example by showing kindness, helping others, and living with faith each day.



**Hail, Holy Queen, Mother of Mercy,  
Hail our life,  
our sweetness and our hope!  
To thee do we cry,  
poor banished children of Eve.  
To thee do we send up our sighs,  
mourning and weeping  
in this valley of tears!  
Turn, then, most gracious Advocate,  
thine eyes of mercy toward us,  
and after this, our exile,  
show unto us  
the blessed fruit of thy womb, Jesus.  
O clement, O loving,  
O sweet Virgin Mary.**

## Congratulations to these children who won an award last week

No individual awards for Y4 and Y5 this week due to their school trip

**St Anselm's Catholic Primary School**

Joshua O

Joshua, you are trying hard to follow our oracy target by taking turns to talk and listen. When you are having a discussion with your partner you make sure to give proof of listening and can tell me your partner ideas.

Teacher *Ms Huddy Mrs D'Wells* 15.5.2026

**St Anselm's Catholic Primary School**

Moradesayo

Moradesayo, the adults in Year 1 are pleased with the progress that you are making with your reading and writing. You are trying to take more care with the presentation of your work and you can now use interesting words and phrases in your writing. You are learning how to work sensibly when working with a partner or in a group and you can settle to any given tasks without fussing. Keep working hard.

Teacher *Mrs Snowden Mrs Hughes* 15.05.26

**St Anselm's Catholic Primary School**

Cormac

It has been so exciting to watch you learn and grow this year! Your reading has improved so much, and you are becoming more confident with words and stories every day. You are joining in with your learning more and settling into your work during lessons. I love seeing how much you have learnt and how happily you share your learning with others. I am so proud of you, and I know you will be proud too!

Teacher *Ms Gahan* 15.05.26

**St Anselm's Catholic Primary School**

Great

You bring your creativity and imagination into everything you do, thinking carefully about interesting details in your drawing, craft and written work. This week, it has been lovely to see your confidence grow, answering more questions on the carpet and sharing your ideas thoughtfully and audibly. This 'Determination and Courage' will make you a super learner. Keep it up!

Teacher *Ms Kelly* 15.5.26

**St Anselm's Catholic Primary School**

Year 6

This week marked a milestone of your primary school journey as you completed your SATs with resilience, positivity and a brilliant attitude from beginning to end. You approached each test with confidence and maturity because you tried in all the hard work and preparation that brought you to this point. What has stood out most is how calmly you tackled each challenge, you knew what you were doing, you supported one another and you simply got on with it. That determination and togetherness says far more about you than any score ever could. Now with SATs behind you, the next exciting chapter of Year 6 is waiting. There are memories still to make, celebrations still to come, and of course an end-of-year performance that we fully expect to be delivered with nothing short of West End quality! To paraphrase the Genie (and excuse the double negative) "We ain't never had a year 6 like this!"

Teacher *Mr Puetzack* 15.05.2026

**Congratulations!**

This certificate is awarded to

Year 3

for

being the top Doodling class this week!

Signed *Miss Svington* Date 15.5.26

**Congratulations!**

This certificate is awarded to

Year 4

for

being the top Doodling class this week!

Signed *Miss Svington* Date 15.5.26

**Congratulations!**

This certificate is awarded to

Year 5

for

being the top Doodling class this week!

Signed *Miss Svington* Date 15.5.26

**Congratulations!**

This certificate is awarded to

Year 4

for

being the top Doodling class this week!

Signed *Miss Svington* Date 15.5.26

**Congratulations!**

This certificate is awarded to

Anashe (Y5)

for

getting the highest number of stars over the last week! (372)

Signed *Miss Svington* Date 15.5.26

**Congratulations!**

This certificate is awarded to

Neriah (Y4)

for

getting the highest number of stars over the last week! (609)

Signed *Miss Svington* Date 15.5.26

**Congratulations!**

This certificate is awarded to

Anashe (Y4)

for

getting the highest number of stars over the last week! (366)

Signed *Miss Svington* Date 15.5.26

**CONGRATULATIONS!**

ON: 15.5.26

FOR: playing more than any other class this week!

SIGNED: *Miss Svington*

Year 5

**CONGRATULATIONS!**

ON: 15.5.26

FOR: playing more than anyone else over the last week! (238 minutes)

SIGNED: *Miss Svington*

Samuel (Y4)

**NUMBOTS**

Seb

For playing more than anyone else during the last week! (60 minutes)

15.5.26 *Miss Svington*

Snack Shack

## KEY DATES

**Monday 18<sup>th</sup> May – 22<sup>nd</sup> May**

Y6 PGL Trip

**Monday 25<sup>th</sup> May**

Half Term Week – School Closed

**Monday 1<sup>st</sup> June**

Term 6 begins

**Friday 5<sup>th</sup> June**

PTFA Kickathon

**Saturday 6<sup>th</sup> June**

First Holy Communion

**Tuesday 9<sup>th</sup> June**

Class Photos

**Friday 12<sup>th</sup> June**

Sports Day

**Thursday 18<sup>th</sup> June**

America Team Celebration Day

PTFA Fathers' Day Shop

**Saturday 27<sup>th</sup> June**

PTFA Family Festival

**Wednesday 8<sup>th</sup> July**

KS2 Aladdin Production

**Thursday 9<sup>th</sup> July**

KS2 Aladdin Production

**Friday 17<sup>th</sup> July**

Leavers' Disco

**Tuesday 21<sup>st</sup> July**

Leavers' Mass

Last day of Term. School closes 1pm

**Snack Shack**

## PRICE LIST

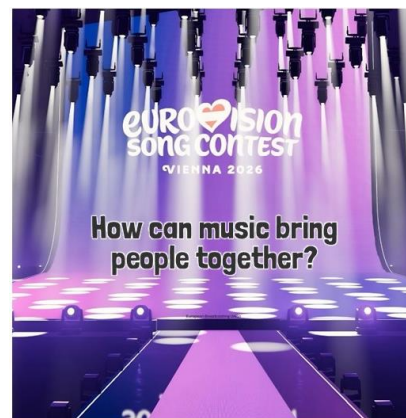
- Piece of fruit 10p
- Welch's Fruit-based snack 30p
- Popcorn 15p
- Smoothies 50p
- Rosary Beads £1
- Team wristbands £1
- Water bottles £2
- Spare water bottle lids 50p
- Fruit Ice Pops coming soon
- Open Mondays and Wednesdays

**'Inspire to Aspire'**



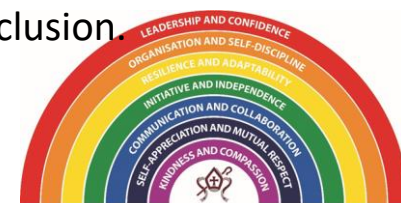
## In the news this week

This week, countries from across Europe and beyond are taking part in the Eurovision Song Contest. Each country performs a song, and millions of people watch and vote for their favourites. The contest celebrates different styles of music, languages, and cultures from around the world.



## Rainbow Curriculum Link

The story links to the Rainbow Curriculum strands of **communication and collaboration**, and **self-appreciation, and mutual respect** because music helps people connect and share experiences across different countries and cultures. Through performing, listening and voting, people work together, express themselves, and learn from one another. Performers take pride in sharing their language, culture, and talents while appreciating the variety and uniqueness of others, promoting respect, understanding, and inclusion.



**DEMOCRACY**  
We all have the right to be heard and to take part in decisions that affect us all.

**RULE OF LAW**  
We are all subject to the law which is applied fairly and equally to everyone.

**INDIVIDUAL LIBERTY**  
We have the freedom to make our own choices and express our own views.

**MUTUAL RESPECT**  
We respect each other and treat everyone with kindness and consideration.

**TOLERANCE**  
We value differences and celebrate the diverse communities we live in.

### Things to talk about at home ...

- What kind of music do you enjoy most, and why? Does everyone in your house enjoy the same music?
- Why do you think people from different countries enjoy listening to music together? Do you believe competitions like Eurovision are fair? Why?
- In your view, does music bring people together, or can it sometimes divide opinions

## Which British Value?

I can see **Democracy** because everyone can use their right to vote to help decide the winner of the contest.

The contest celebrates lots of cultures and traditions showing **Mutual Respect and Tolerance**.

## Which protected characteristic?

The Eurovision Song Contest celebrates the protected characteristic of **race**, because it brings people together from many different countries, cultures, and backgrounds to share their music.



### This week's focus for Y5 & Y6:

#### Risky objects

#### Key messages we learned:

Some everyday objects can become dangerous if they are used in unsafe ways. Objects such as stones, broken glass, fireworks, catapults, elastic bands and vapes can cause serious harm or injury. "Intent does not remove danger" — even if someone thinks something is "just a joke" or "only playing", people can still get hurt. Peer pressure can sometimes encourage unsafe choices, so it is important to feel confident saying "no". If we see risky or unsafe behaviour, we should prioritise safety rather than joining in or filming it. When faced with a risky object, we should: **STOP; MOVE AWAY; GET HELP; TELL A TRUSTED ADULT**. During the session, pupils discussed a range of real-life scenarios involving risky objects and explored how to respond safely and responsibly.

#### This week's task:

Choose a risky object and tell someone at home how they could be dangerous:

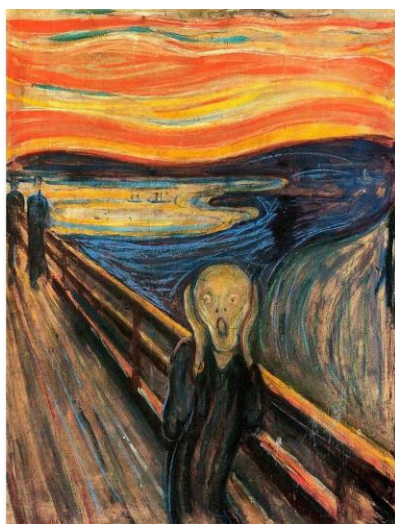
- Glass – Stones – Fireworks – Elastic bands
- – Catapults – Vapes

#### How you can support at home:

Talk with your child about making safe choices when out with friends or in the community. Reinforce that they should never feel pressured to try something unsafe and that getting help from a trusted adult is always the right thing to do if they are worried about someone's safety.



### In Culture Club this term, we are learning about famous paintings.



The Scream is a famous painting made by Edvard Munch in 1893. It shows a person standing on a bridge with their hands on their face, looking shocked and frightened. Behind the person, the sky is swirling with bright orange, red, and yellow colors, making the picture look dramatic and a little mysterious.

Edvard Munch painted *The Scream* to show strong feelings and emotions. He once wrote that he felt very worried and scared while walking outside at sunset, and the painting was inspired by that moment. The painting is special because it does not try to look realistic. Instead, the artist used bold colors, wavy lines, and unusual shapes to show emotions. This style helps people feel the fear, sadness, and anxiety in the picture.

Today, *The Scream* is one of the most famous artworks in the world. Many people recognise it because of the unusual face and powerful expression. It reminds us that art can show feelings just as much as it can show people or places.





# St Anselm's School Term Dates 2026-27

SEPTEMBER							OCTOBER							NOVEMBER							DECEMBER						
M	T	W	T	F	S	S	M	T	W	T	F	S	S	M	T	W	T	F	S	S	M	T	W	T	F	S	S
	1	2	3	4	5	6				1	2	3	4							1		1	2	3	4	5	6
7	8	9	10	11	12	13	5	6	7	8	9	10	11	2	3	4	5	6	7	8	7	8	9	10	11	12	13
14	15	16	17	18	19	20	12	13	14	15	16	17	18	9	10	11	12	13	14	15	14	15	16	17	18	19	20
21	22	23	24	25	26	27	19	20	21	22	23	24	25	16	17	18	19	20	21	22	21	22	23	24	25	26	27
28	29	30					26	27	28	29	30	31		23	24	25	26	27	28	29	28	29	30	31			
														30													

JANUARY							FEBRUARY							MARCH							APRIL						
M	T	W	T	F	S	S	M	T	W	T	F	S	S	M	T	W	T	F	S	S	M	T	W	T	F	S	S
				1	2	3	1	2	3	4	5	6	7	1	2	3	4	5	6	7				1	2	3	4
4	5	6	7	8	9	10	8	9	10	11	12	13	14	8	9	10	11	12	13	14	5	6	7	8	9	10	11
11	12	13	14	15	16	17	15	16	17	18	19	20	21	15	16	17	18	19	20	21	12	13	14	15	16	17	18
18	19	20	21	22	23	24	22	23	24	25	26	27	28	22	23	24	25	26	27	28	19	20	21	22	23	24	25
25	26	27	28	29	30	31								29	30	31					26	27	28	29	30		

MAY							JUNE							JULY							AUGUST						
M	T	W	T	F	S	S	M	T	W	T	F	S	S	M	T	W	T	F	S	S	M	T	W	T	F	S	S
					1	2		1	2	3	4	5	6				1	2	3	4							1
3	4	5	6	7	8	9	7	8	9	10	11	12	13	5	6	7	8	9	10	11	2	3	4	5	6	7	8
10	11	12	13	14	15	16	14	15	16	17	18	19	20	12	13	14	15	16	17	18	9	10	11	12	13	14	15
17	18	19	20	21	22	23	21	22	23	24	25	26	27	19	20	21	22	23	24	25	16	17	18	19	20	21	22
24	25	26	27	28	29	30	28	29	30					26	27	28	29	30	31		23	24	25	26	27	28	29
31																					30	31					

Holiday
Bank holiday
INSET day



# St Anselm's School Term Dates 2027 – 2028

SEPTEMBER							OCTOBER							NOVEMBER							DECEMBER						
M	T	W	T	F	S	S	M	T	W	T	F	S	S	M	T	W	T	F	S	S	M	T	W	T	F	S	S
		1	2	3	4	5					1	2	3	1	2	3	4	5	6	7			1	2	3	4	5
6	7	8	9	10	11	12	4	5	6	7	8	9	10	8	9	10	11	12	13	14	6	7	8	9	10	11	12
13	14	15	16	17	18	19	11	12	13	14	15	16	17	15	16	17	18	19	20	21	13	14	15	16	17	18	19
20	21	22	23	24	25	26	18	19	20	21	22	23	24	22	23	24	25	26	27	28	20	21	22	23	24	25	26
27	28	29	30				25	26	27	28	29	30	31	29	30						27	28	29	30	31		

JANUARY							FEBRUARY							MARCH							APRIL						
M	T	W	T	F	S	S	M	T	W	T	F	S	S	M	T	W	T	F	S	S	M	T	W	T	F	S	S
					1	2		1	2	3	4	5	6			1	2	3	4	5						1	2
3	4	5	6	7	8	9	7	8	9	10	11	12	13	6	7	8	9	10	11	12	3	4	5	6	7	8	9
10	11	12	13	14	15	16	14	15	16	17	18	19	20	13	14	15	16	17	18	19	10	11	12	13	14	15	16
17	18	19	20	21	22	23	21	22	23	24	25	26	27	20	21	22	23	24	25	26	17	18	19	20	21	22	23
24	25	26	27	28	29	30	28	29						27	28	29	30	31			24	25	26	27	28	29	30
31																											

MAY							JUNE							JULY							AUGUST						
M	T	W	T	F	S	S	M	T	W	T	F	S	S	M	T	W	T	F	S	S	M	T	W	T	F	S	S
1	2	3	4	5	6	7				1	2	3	4						1	2		1	2	3	4	5	6
8	9	10	11	12	13	14	5	6	7	8	9	10	11	3	4	5	6	7	8	9	7	8	9	10	11	12	13
15	16	17	18	19	20	21	12	13	14	15	16	17	18	10	11	12	13	14	15	16	14	15	16	17	18	19	20
22	23	24	25	26	27	28	19	20	21	22	23	24	25	17	18	19	20	21	22	23	21	22	23	24	25	26	27
29	30	31					26	27	28	29	30			24	25	26	27	28	29	30	28	29	30	31			
														31													

Holiday
Bank holiday
INSET day

ST ANSELM'S PTFA PRESENTS

★ OUR FATHER'S DAY ★  
**SHOP**

**IS BACK!**

★ HELP YOUR CHILDREN  
★ CELEBRATE THE SPECIAL  
★ MEN IN THEIR LIVES! ★



THE FATHER'S DAY SHOP WILL BE HELD IN SCHOOL ON  
**THURSDAY 18<sup>TH</sup> JUNE 2026**

CHILDREN WILL HAVE THE OPPORTUNITY TO  
CHOOSE A GIFT FOR THEIR DAD OR SUPERHERO IN THEIR LIFE

EACH  
GIFT BAG  
JUST  
£6!

**PURCHASE YOUR VOUCHERS HERE:**  
[www.pta-events.co.uk/stanselms](http://www.pta-events.co.uk/stanselms)

OR SCAN THE QR CODE BELOW



★ SALES CLOSE AT 5PM ON TUESDAY 16TH JUNE ★



#TOGETHERWEAREBETTER





# Should I keep my child off school?

## Yes

### Until...

<b>Chickenpox</b>	at least 5 days from the onset of the rash and until all blisters have crusted over
<b>Diarrhoea and Vomiting</b>	48 hours after their last episode
<b>Cold and Flu-like illness (including COVID-19)</b>	they no longer have a high temperature and feel well enough to attend. Follow the national guidance if they've tested positive for COVID-19.
<b>Impetigo</b>	their sores have crusted and healed, or 48 hours after they started antibiotics
<b>Measles</b>	4 days after the rash first appeared
<b>Mumps</b>	5 days after the swelling started
<b>Scabies</b>	they've had their first treatment
<b>Scarlet Fever</b>	24 hours after they started taking antibiotics
<b>Whooping Cough</b>	48 hours after they started taking antibiotics

## No

but make sure you let their school or nursery know about...

<b>Hand, foot and mouth</b>	<b>Glandular fever</b>
<b>Head lice</b>	<b>Tonsillitis</b>
<b>Threadworms</b>	<b>Slapped cheek</b>



SCAN ME

### Advice and guidance

To find out more, search for health protection in schools or scan the QR code or visit <https://qrco.de/minfec>.

# PARENT & FAMILY SUPPORT

## Mental Health, Wellbeing and Safeguarding Resources

### St Anselm's Catholic Primary School

#### Safeguarding Support at School

If you have concerns about your safety, your child's safety, or their wellbeing, please contact the Designated Safeguarding Lead (DSL).

**Email:** [dsl@st-anselms.kent.sch.uk](mailto:dsl@st-anselms.kent.sch.uk)

If a child is in immediate danger call **999**.

#### Domestic Abuse Support

**National Domestic Abuse Helpline**

Call **0808 2000 247** (24 hours a day)

Chat: Mon–Fri 10am–10pm

[Domestic abuse support information](#)

#### Additional Support Services

Childline: 0800 1111 (24hrs)

Samaritans: 116 123 (24hrs)

[YoungMinds](#)

[Beat Eating Disorder Support](#)

[Kidscape](#)

#### Fast Track Counselling for Parents

North Kent Mind offers fast track counselling for parents.

£40–£45 per session with short waiting times.

[Visit service page](#)

#### Kooth – Free Online Mental Health Support

Free anonymous online counselling for young people aged 10–25. Available daily including evenings and weekends.

[www.kooth.com](http://www.kooth.com)

Parent support email: [parents@kooth.com](mailto:parents@kooth.com)

